

Residential applications

Feeling the comfort of a protected and smart home

Essential applications

Residential applications

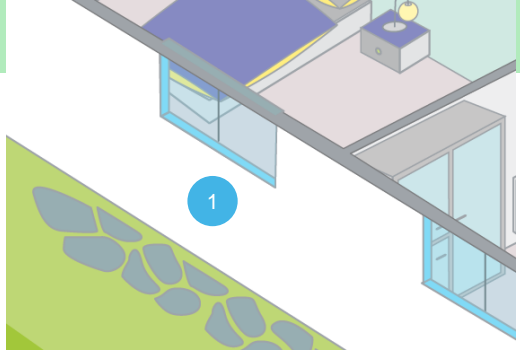
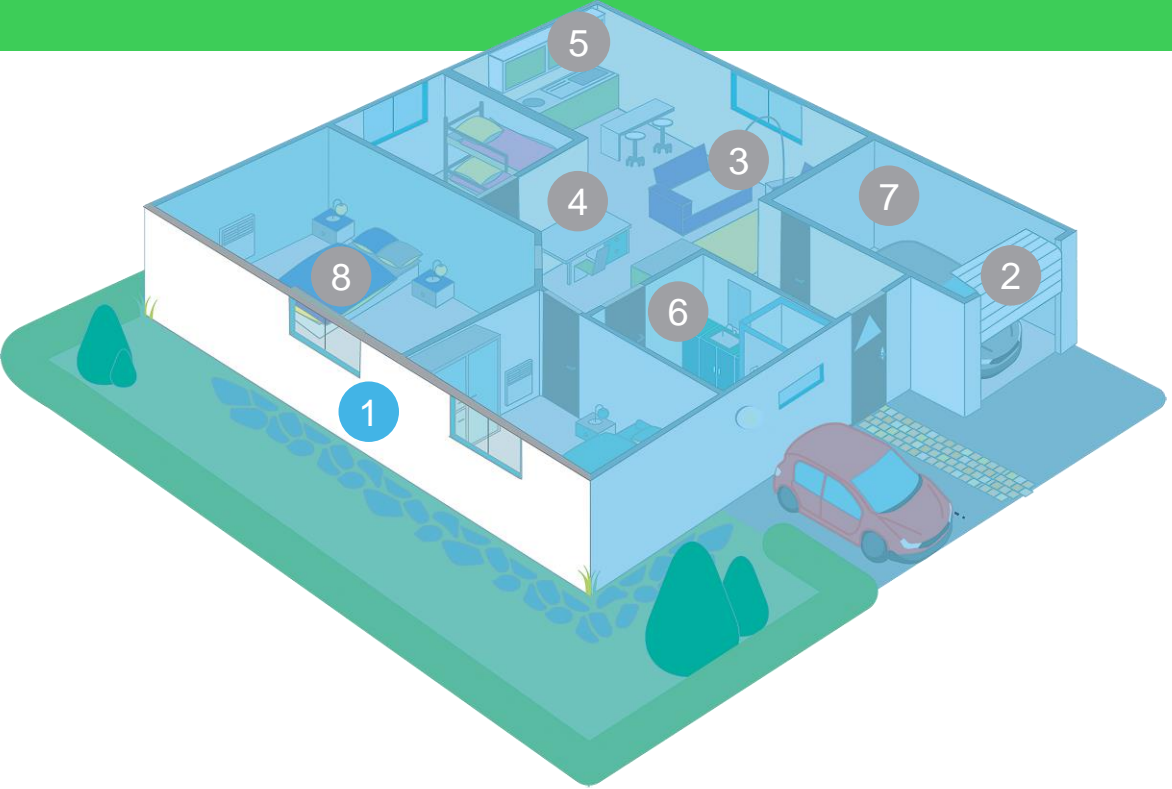


- 1 Motorized roller shutters
- 2 Motorized garage door
- 3 Smart TV, video game, home theater, audio system, CCTV, lightings
- 4 Network equipment, desktop PC, laptop, WIFI router / switches / comm. devices
- 5 Washing machine, dishwasher, fridge / freezer
- 6 Kitchen, bathroom and toilet macerator system
- 7 Basement pump, home automation, swimming pool pump, water softener
- 8 Home medical applications

Essential applications

01 Motorized roller shutters

BACK



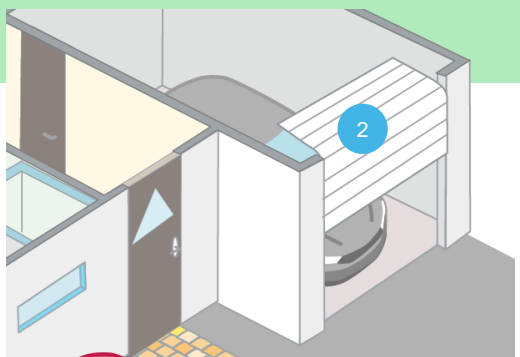
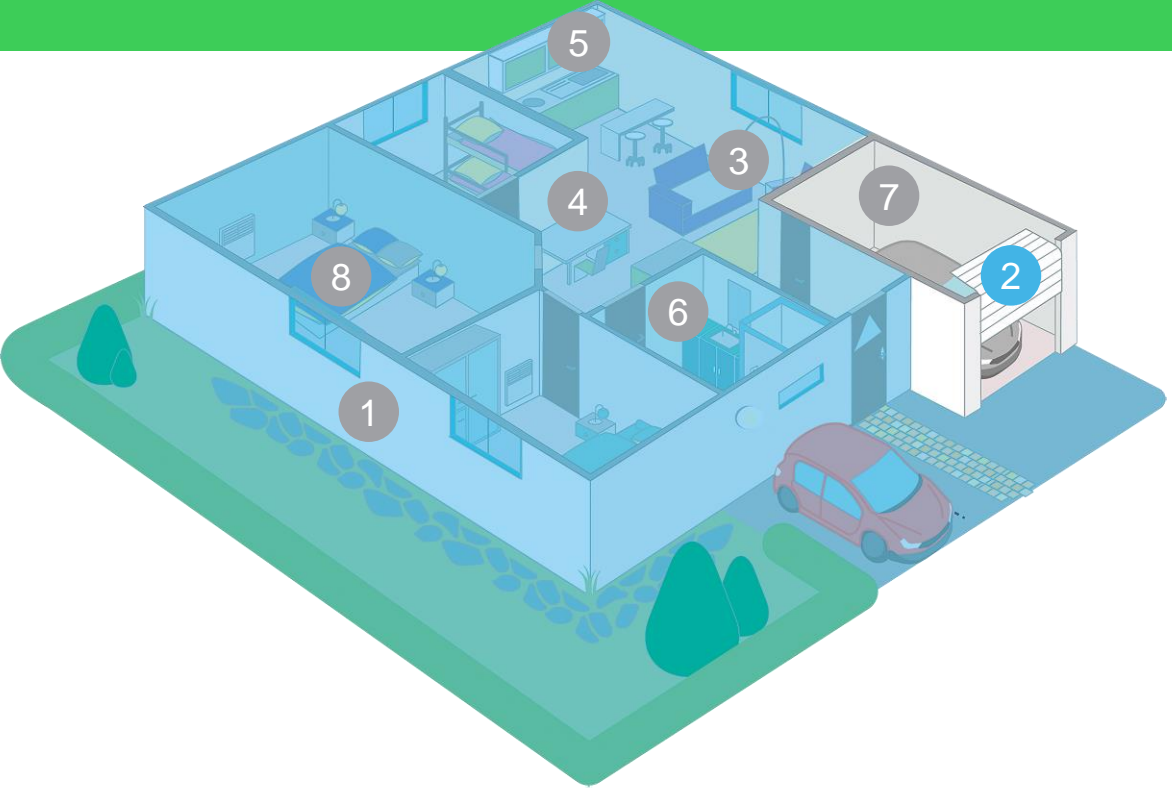
Continue to open and close your roller shutters during a power outage.

UPS 0 to 3 kVA

Essential applications

02 Motorized garage door

BACK

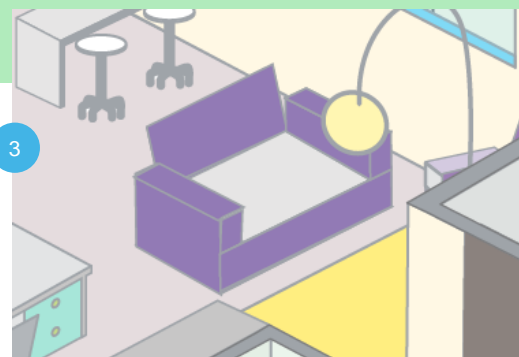
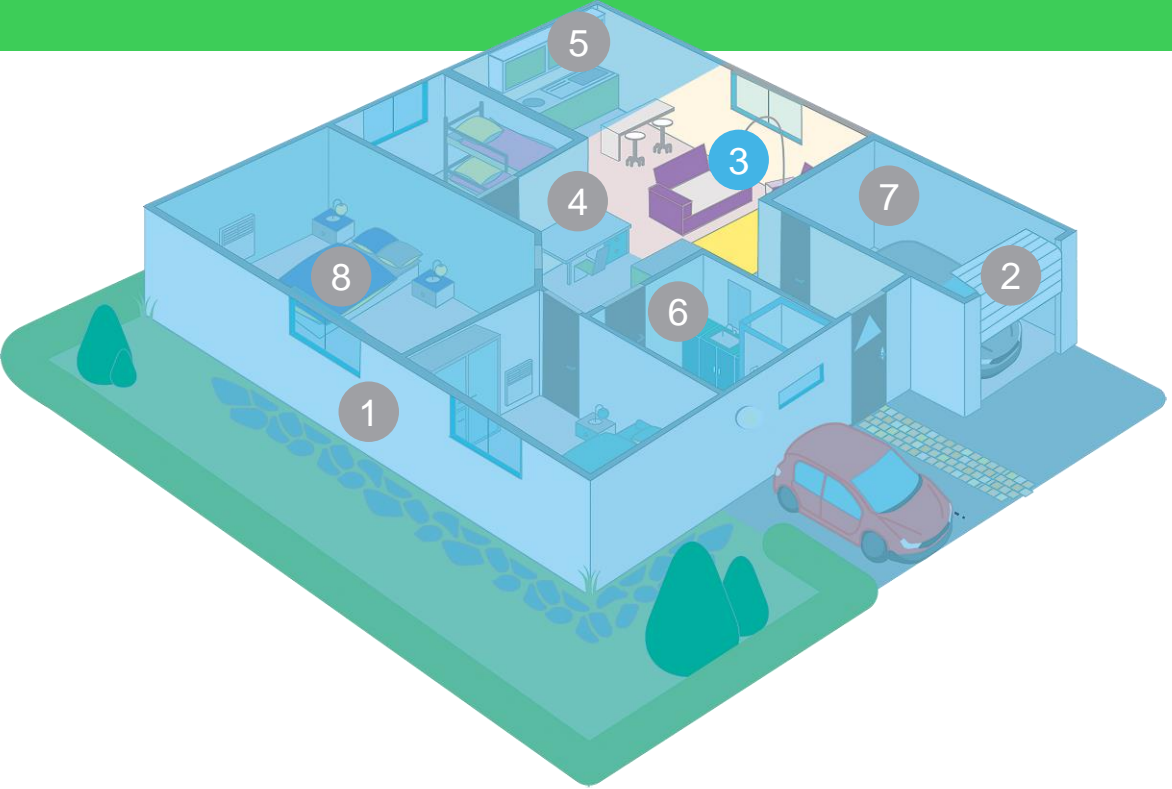


Never get stuck because of a power outage, allowing you to leave home with peace of mind.
UPS 0.5 to 2 kVA

Essential applications

03 Smart TV, video game, home theater ...

BACK



... audio system, CCTV, pellet stove

Secure comfort at home.

Protect your electronic equipment from disturbances and ensure it has a longer lifetime.

UPS – 1 kVA up to 3 kVA

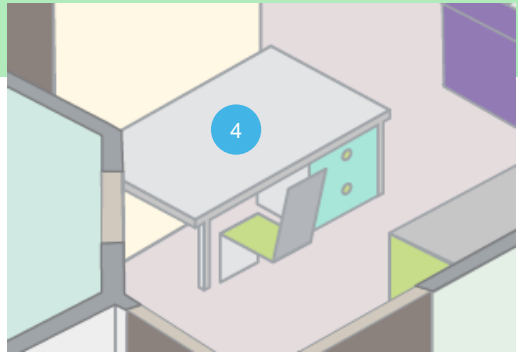
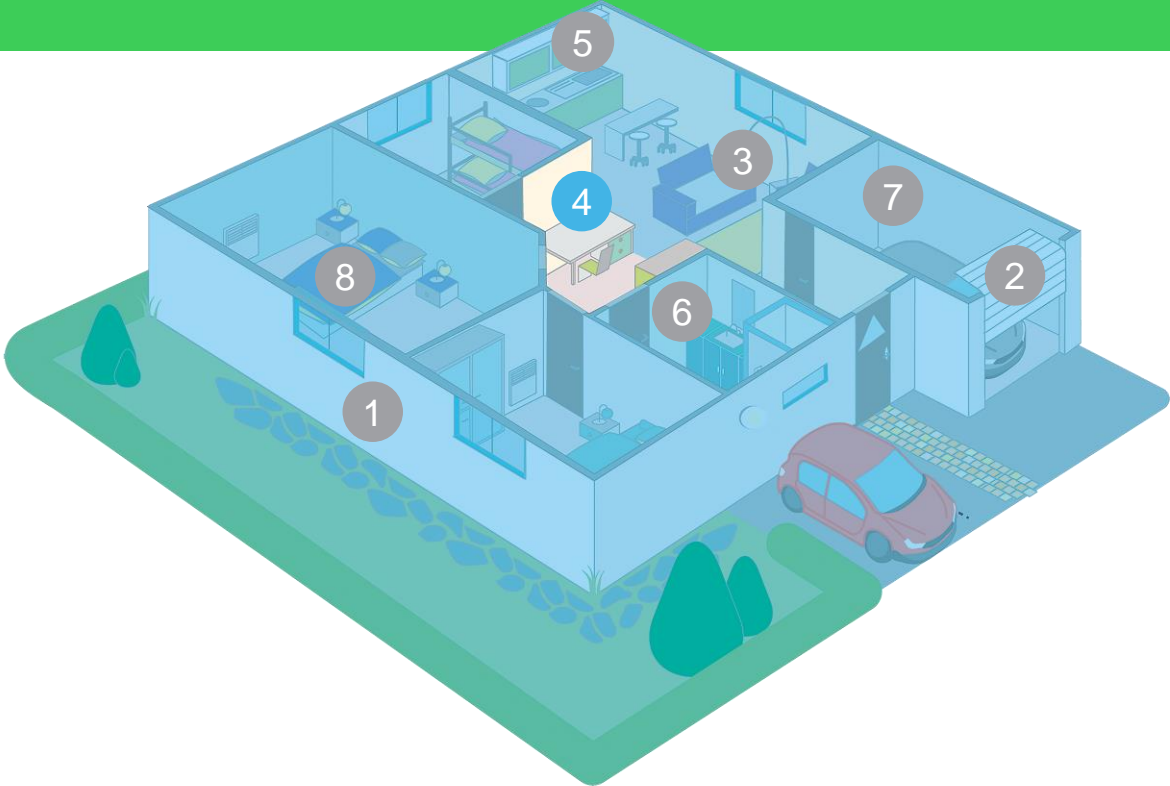
AVR – 0.6 to 1.2 kVA

Surge arrester

Essential applications

04 Network equipment, desktop PC ...

BACK



... laptop, WIFI router / switches / comm. devices

Never lose data and secure network connections (leisure, home office, etc.).

UPS – 1 kVA up to 3 kVA

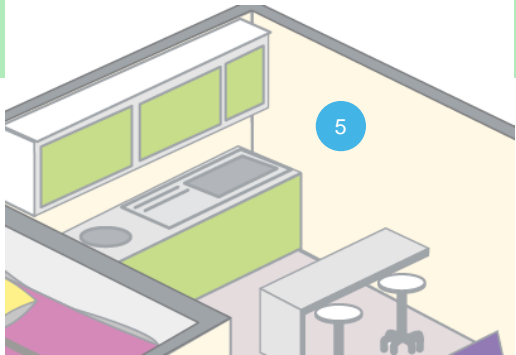
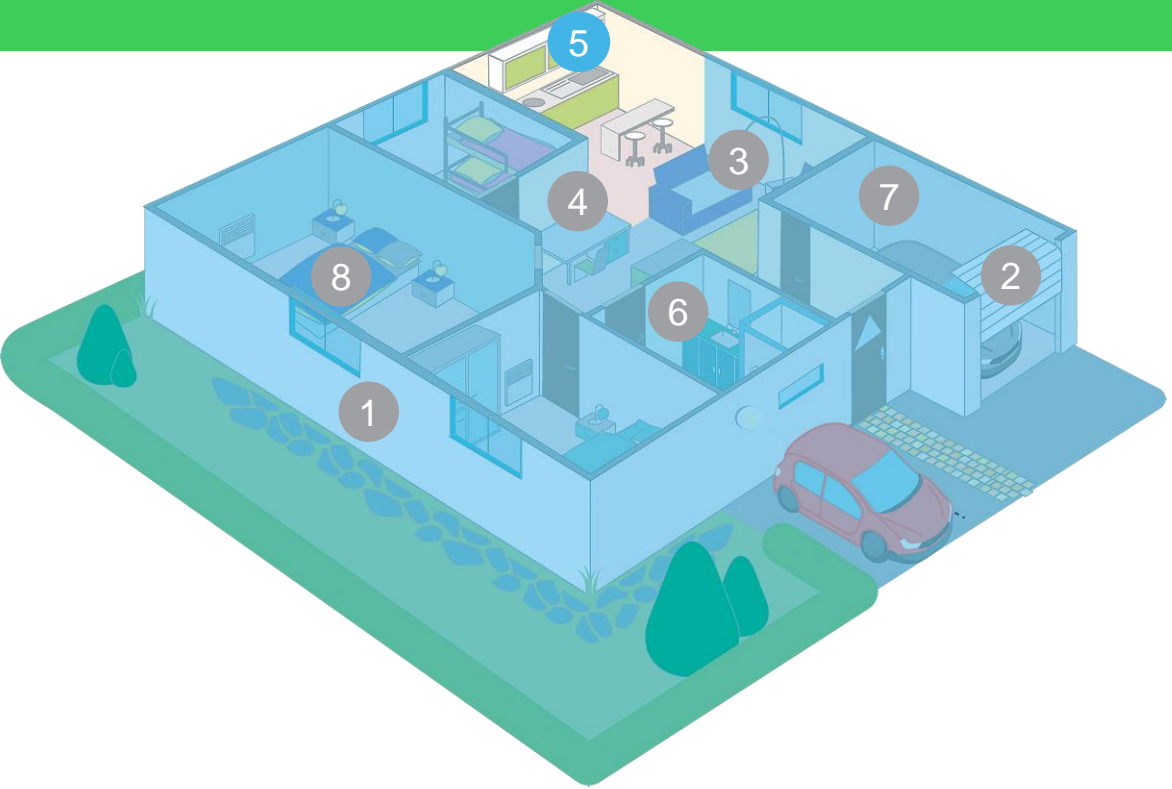
AVR – 0.6 to 1.2 kVA

Surge arrester

Essential applications

05 Data and smart home applications

BACK



Protect your major appliances from disturbances and ensure they have a longer lifetime.

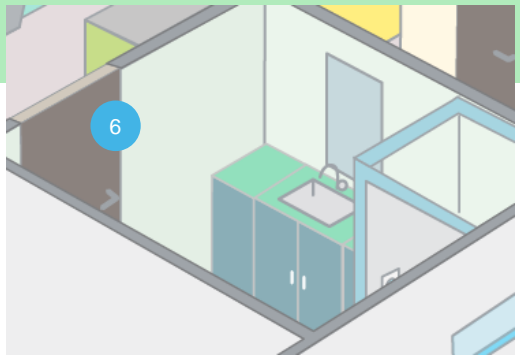
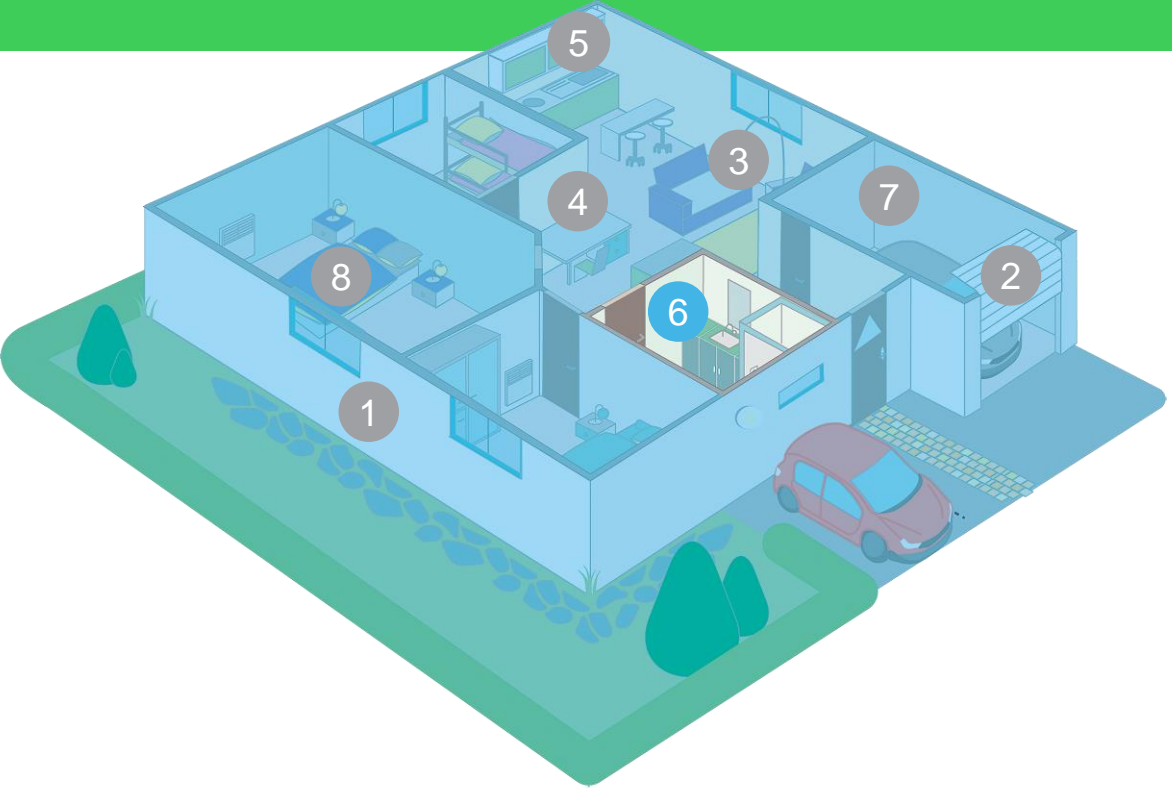
UPS – 1 kVA up to 3 kVA

AVR – 0.6 to 1.2 kVA

Essential applications

06 Kitchen, bathroom and toilet...

BACK



... macerator system

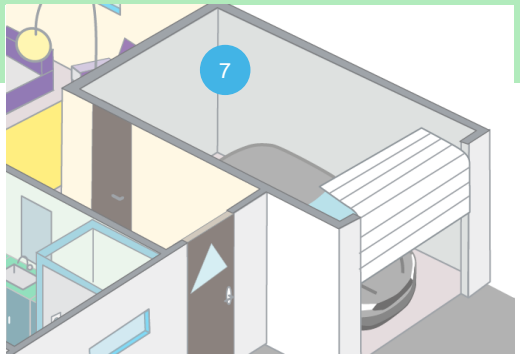
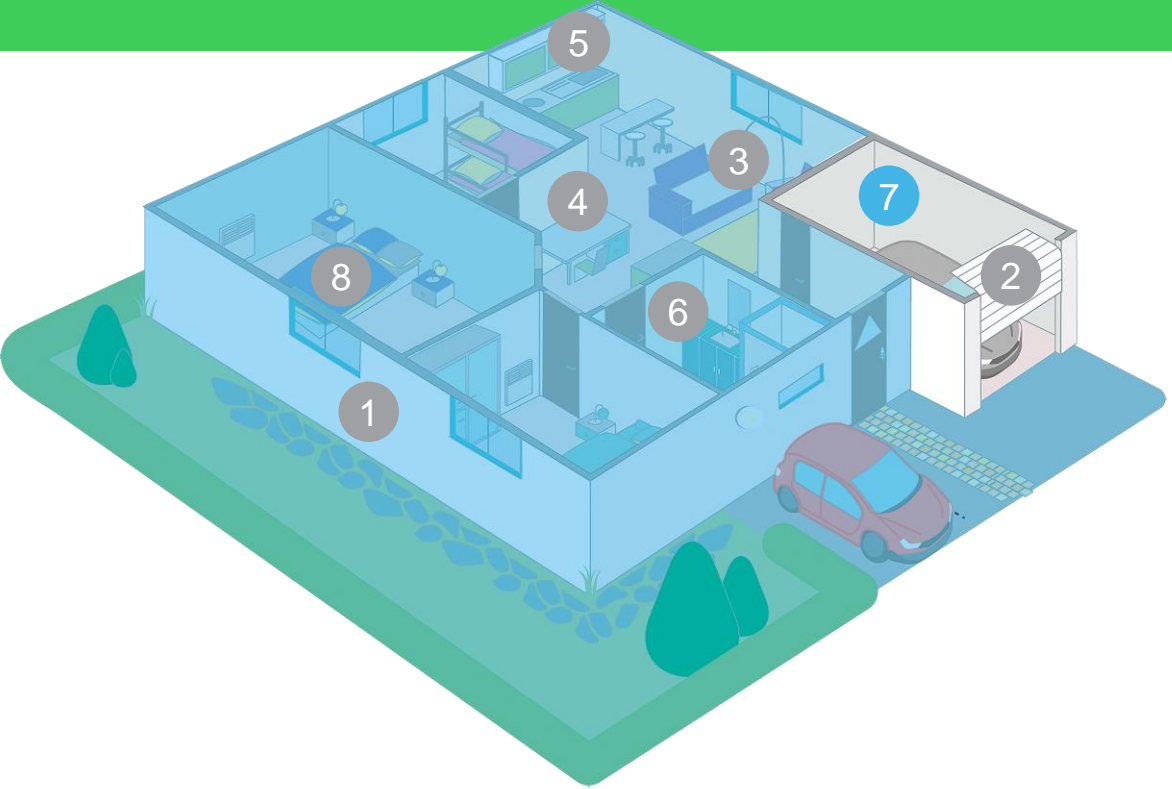
Continuity of service, even in the case of a power outage

UPS – 500 VA to 2 kVA

Essential applications

07 Basement pump, home automation ...

BACK



... swimming pool pump, water softener, lighting

Ensure energy supply to these devices and protect them from power disturbances.

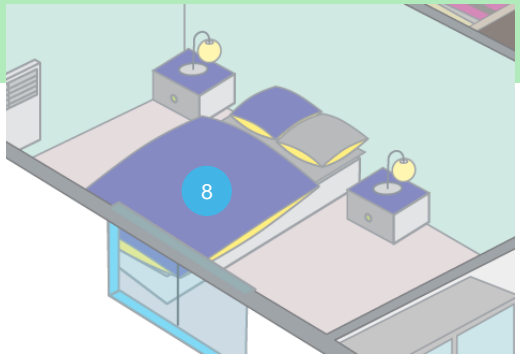
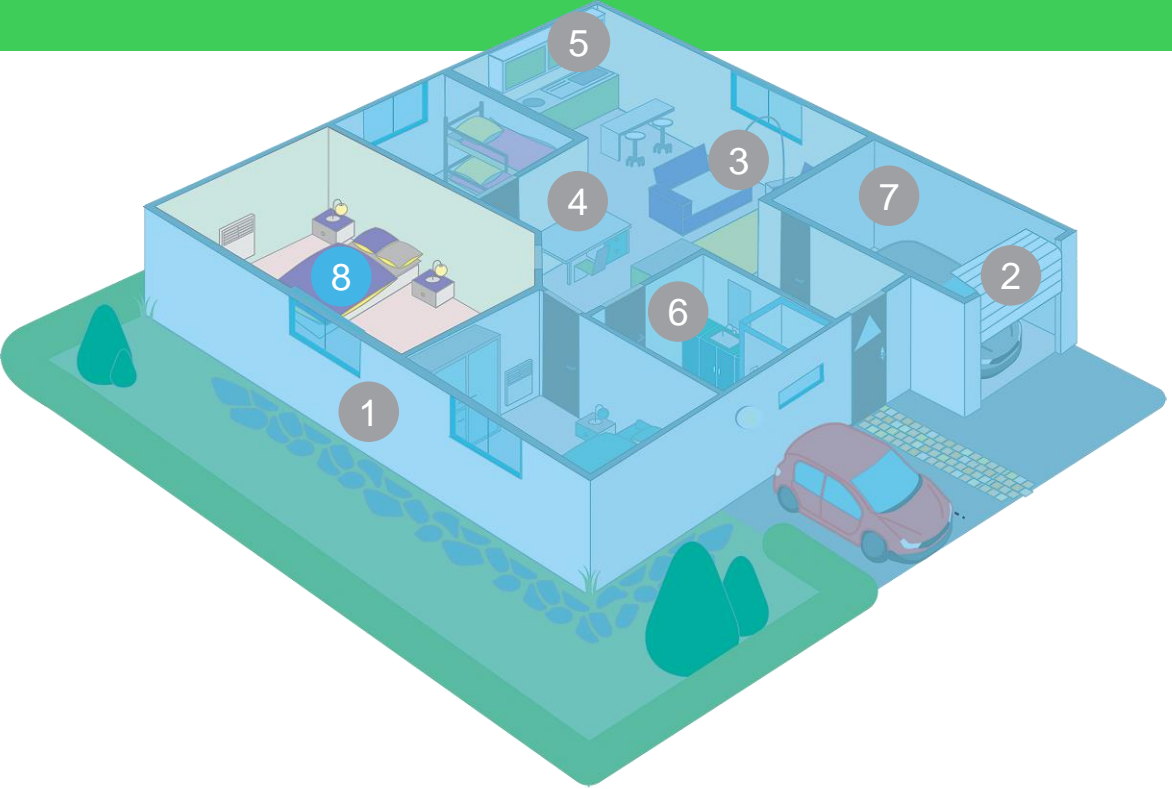
UPS – 1 kVA up to 3 kVA

AVR – 0.6 to 1.2 kVA

Essential applications

08 Home medical applications

BACK



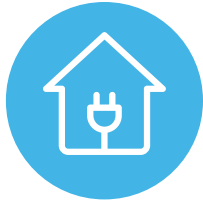
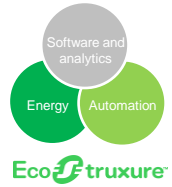
Ensure medical applications such as respirators, tube feeding devices and medical beds, making sure they are always ON and protected from power disturbances.

UPS – 1 kVA up to 6 kVA

AVR – 0.6 to 1.2 kVA

Your challenges are our **value proposal**

Providing safety, security and comfort to households and laying the foundations for the success of smart homes



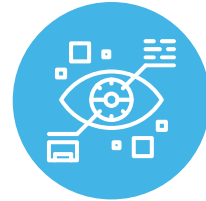
Enable households to adjust to different power requirements, ensuring continuity of service no matter what.



Always enjoy the comfort and convenience you expect from your home devices.



Ensure safety and security for people and property, including special care for children and people with special needs.



Get the best out of your connected devices and automated equipment.

Secure Power portfolio for residential

Schneider Electric solutions

UPS



0.375 kVA – 10 kVA

- The UPS offers guaranteed power, surge protection and continuity of service of wireless networks, computers, gaming consoles and other electronics in your home
- Models supply battery backup during outages and unsafe voltage fluctuations, as well as provide protection from damaging surges and spikes
- Available in 'tower' or 'floor' styles, and with a variety of standard features, they are the perfect choice to protect your assets and keep you connected

Surge protection

Surge Arrester



0.5 – 1.1 kVA

- The surge arrester provides the premium level of surge protection for computers, televisions, gaming consoles, printers and other electronic devices in the event of large electrical surge

AVR



Line-R

0.6 – 1.2 kVA

- Protect your sensitive electronic equipment from brownouts and over-voltages with automatic voltage regulator
- Uncorrected voltage fluctuations gradually degrade the life of electronic components, potentially causing premature failure

Life Is On

Schneider
Electric